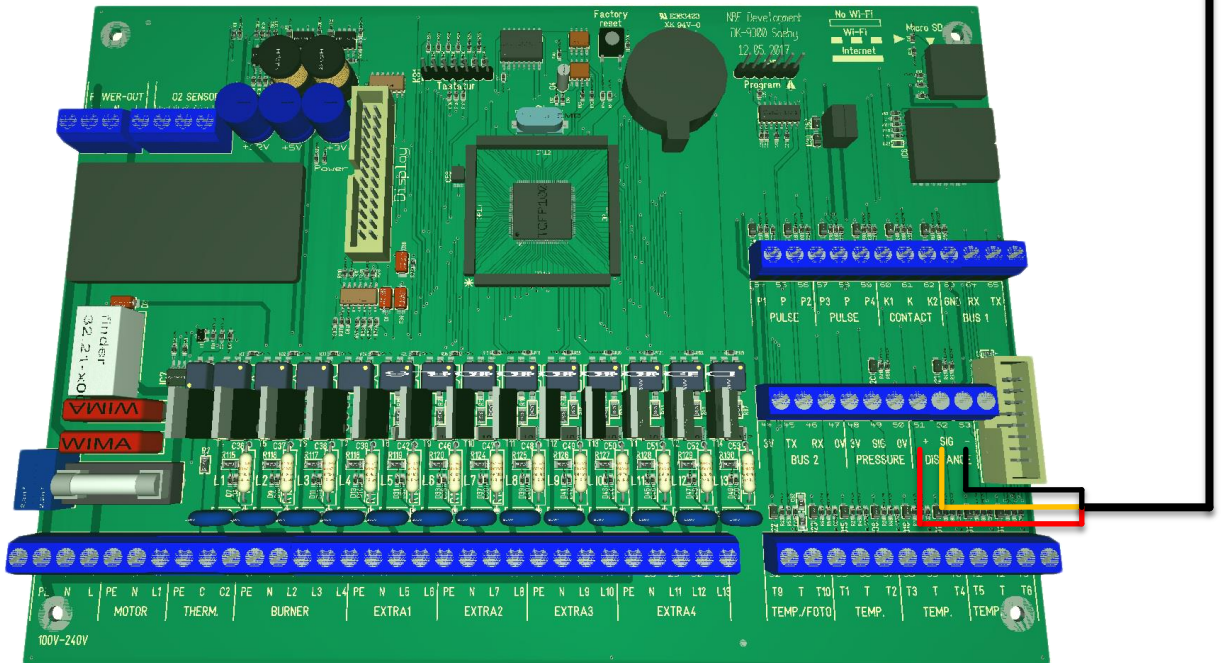


# Hopper Content Sensor

Installation on V13 controller



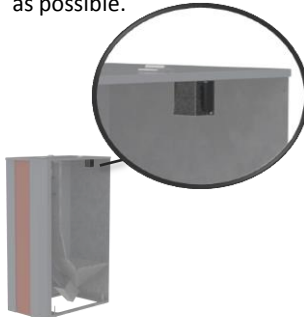
Printboard connection



Insert the two magnets into the sensor mount



Mount the distance sensor on the top of the hopper and as close to the outlet as possible.



Distance Sensor for 10-80 cm

**Note:** measurement readings outside of this range will show an error in the display.



Distance sensor for 20-150 cm

**Note:** measurement readings outside of this range will show an error in the display.



## Installation:

Mount the hopper content sensor in the hopper. **Exceeding the Min and Max distances will result in an error reading.**